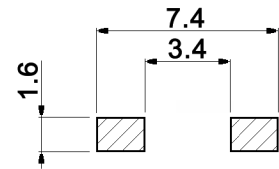


P.C. MOUNTING

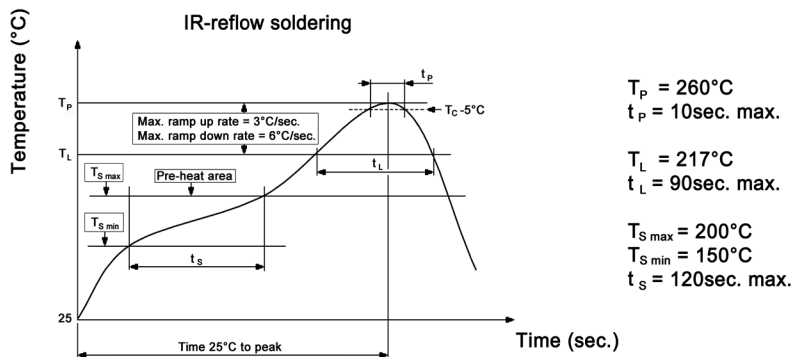


x	Height	Packaging unit	y	Operating force	Color of stem	Electrical life
1	4.3mm	1 800 pcs./reel	N	160 +/-50gf	brown	50 000 cycles
2	5.0mm	1 600 pcs./reel	R	260 +/-50gf	red	30 000 cycles
			S	320 +/-80gf	salmon	50 000 cycles
			Y	520 +/-130gf	yellow	30 000 cycles

Specifications:

Contact rating: 50mA, 12V DC
 Contact resistance: 100mOhm max.
 Insulation resistance: 100MOhm min. at 500V DC
 Dielectric strength: 250V, 50Hz for the duration of 1 minute
 Operating temperature: -40°C to +90°C
 Travel: 0.25mm +0.2/-0.1mm
 Mounting: on pc-board - SMD
 Material: Contacts: stainless steel, 0.5µm silver plated
 Terminals: brass, 1µm silver plated over 1µm nickel
 Cover: stainless steel
 Base / stem: high-temp. nylon meets UL94V-0 or PPA

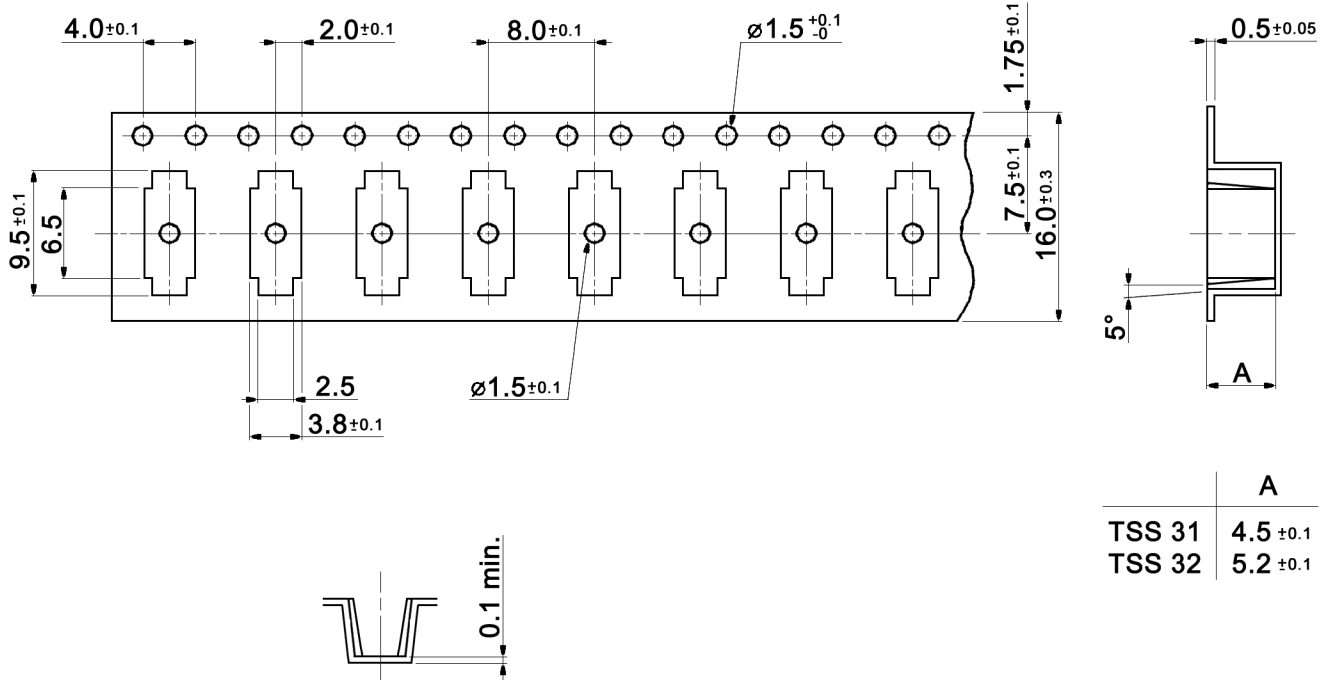
Soldering conditions:



Compliance: RohS III (2015/863/EU)

Tolerances:			Date	Name	TSS 3x y
			08/07	RMG	
Picking area	03/20	dr			
Plating	12/17	dr			
Operating temperature	07/17	dr			
Soldering conditions	10/15	dr			
Table "y"	09/11	dr	knitter-switch		30 06 17
Specifications	08/09	dr			
Modifications	Date	Name			Page 1/2

Packaging:



	A
TSS 31	4.5 ±0.1
TSS 32	5.2 ±0.1

Compliance: RohS III (2015/863/EU)

Tolerances:			Date	Name	TSS 3x y
			08/07	RMG	
Picking area	03/20	dr			
Plating	12/17	dr			
Operating temperature	07/17	dr			30 06 17
Soldering conditions	10/15	dr	knitter-switch		
Table "y"	09/11	dr			
Specifications	08/09	dr			Page
Modifications	Date	Name			2/2